

THE KING'S

NEWS FOR ALUMNI AND FRIENDS OF THE KING'S UNIVERSITY / WINTER 2016

# CONNECTION

WALKING THE TALK AT KING'S | JUSTICE LOOKS LIKE JESUS | LEARNING TO TRANSFORM THE WORLD  
LEDER SCHOOL OF BUSINESS | MESSAGE FROM THE PRESIDENT | PLUGGED INTO GLOBAL ISSUES



THE  
**KING'S**  
UNIVERSITY

## Upcoming events



**March 14-19**

A week of festivities  
highlighting what makes King's  
a great community.

For more details on Celebrate King's  
Week events and promotions, visit  
[kingsu.ca/alumni](http://kingsu.ca/alumni)

**March 18, 7 pm**

**STUDENT'S  
ASSOCIATION  
OPEN MIC  
NIGHT**



**March 17, 2 pm**

RSVP to Karen  
780-465-8314  
or online  
[KingsTea.eventbrite.ca](http://KingsTea.eventbrite.ca)

**March 19, 9:30 am - 1 pm**

**KIDS @ KING'S**

Children up to age 12 are invited to register for  
kid-sized classes with real King's professors and  
earn their degree in just one day!  
Visit [KidsatKings.eventbrite.ca](http://KidsatKings.eventbrite.ca) for more details.

**March 18-22**

**KING'S CHOIR  
TOUR**

Tour that includes  
Saskatoon, Regina,  
Brandon and Winnipeg.

**April 2, 7:30 pm**

**PERFORMING  
ARTS SERIES:  
JOACHIM  
SEGGER, PIANO,  
NICHOLAS B.  
KNOPPERS HALL**

Tickets available from  
the King's Bookstore and  
at the door. \$20/Adults,  
\$15/Students/Seniors,  
King's Students free at  
the door (with i.d.)

**April 17, 7:30 pm**

**SPRING CHOIR  
CONCERT**

First Presbyterian  
Church, 10025 - 105th  
Street, Edmonton. Tickets  
available from the King's  
Bookstore and at the door.  
\$20/Adults, \$15/Students/  
Seniors.



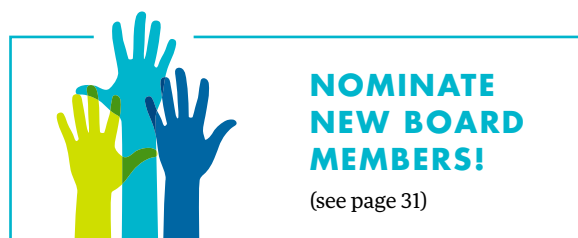
# Table of Contents

President's Message .....	4
King's Faculty into the World.....	6
IS Conference: Change is in the Air .....	8
IS Conference: Playing God .....	8
Annual Community Banquet & Silent Auction.....	9
Christmas Light Up.....	10
Guild Sale Earns Highest Revenue .....	11
Walking the Talk at King's .....	12
All Have Always Been Welcome .....	14
"I Am Not My Own" .....	14
Collaborative Research in the Community.....	14
Learning to Transform the World.....	15
Justice Looks Like Jesus.....	16
Plugged into Global Issues .....	17
Leder Update.....	18
Significant Student Increase in School of Business.....	18
1st Annual Case Competition.....	19
Student Engagement .....	20
Why King's .....	21
Jumping In With Both Feet.....	22
Alumni News .....	23
Badminton Star Joins King's Coaching Team .....	27
Men's Soccer Team in Provincials.....	28
Matthew Oosterhuis Honoured.....	28
New Executive Director Named for Foundation.....	29
Planned Giving.....	30



## COVER ART BY DANIEL VANHEYST, PROFESSOR OF ART AND DRAMA

The artist's statement: "Lady Justice is traditionally presented as a triumphant figure, blindfolded, waving a sword and holding a balancing scale. Here, she is pulling off the blindfold, her sword is broken beneath her feet, and her scales have become a guiding light welcoming you to sit with her on a bench like the Reconciliation Bench recently installed on The King's campus- perhaps a more fitting expression of the biblical call to "do justice' with humility and mercy."



### PLEASE SEND ALUMNI UPDATES AND ADDRESS CHANGES TO:

Alumni Relations  
9125 - 50 Street NW  
Edmonton, Alberta, Canada  
T6E 2H3  
or call: 780.465.8318  
alumni@kingsu.ca

### DIRECT COMMENTS REGARDING ARTICLES TO:

VP Institutional  
Advancement  
Dan VanKeeken  
780.465.3500 ext 8087  
dan.vankeeken@kingsu.ca

MESSAGE FROM THE PRESIDENT

## GREETINGS FROM THE KING'S UNIVERSITY!



It is wonderful to be able to say officially – The King's University! It has been a long road since we were first granted permission to change our name in July 2014. A festive and excited group attended the third reading of our private bill at the Legislative Assembly on December 9. Our MLA **Marlin Schmidt** did a lovely job in his speech of incorporating messages from students, alumni and our MP, **Linda Duncan**. The Lieutenant Governor **Lois Mitchell** completed the process with Royal Assent on December 11. Thank you for all your continued prayers and support along the way.

The name change felt like an early Christmas gift to our community. It has been an excellent year. There are so many good stories to tell. Our enrolment is up 8% over last year. We are currently at 778 students. There is great energy and enthusiasm around the new projects and ideas ensuing from Shared Vision 2020, our new strategic plan. Some highlights include:

## 1. Serving Community

- Dedication of a commemorative bench & garden on campus, honoring our institutional commitment to the Truth and Reconciliation Commission
- High school case competition held by the Leder School of Business on the topic of Ending Poverty in Edmonton
- The Interdisciplinary Studies conference this fall featured keynote speaker Andy Crouch and his recent book, *Playing God: Redeeming the Gift of Power*
- The production of HALO, a drama replete with frailty, grace and forgiveness
- The King's music department and choirs treated us to a magnificent evening "God with Us" at the Francis Winspear Centre for Music
- Celebrated the 20 year anniversary of participating in the Honduras Water Project

## 2. Strengthen Teaching & Research

- The Education program celebrated more than 20 years of training and inspiring great teachers to work in communities around the world
- Eligibility for a Canada Research Chair position, funded by the federal government for 5 years with the possibility of an additional 5 years
- The General Faculty Council and the Senate have approved the 4-year B.A. Sociology degree program proposal

- Conducted program reviews of the English and Biology degree programs. We have also started the review of the B.Ed. after-degree program, the PHE program, the 3-year B.A. Social Sciences program and a review of the foundations curriculum
- Established relationships for potential collaboration and student exchange with Christian post-secondary institutions in The Netherlands, Hungary, Lithuania, Thailand and Turkey

## 3. Equip Student Success

- Hired our first full-time student counsellor
- Set up a career/vocation taskforce to look at vocational discernment across the university
- Men's soccer went to ACAC championships for the first time

## 4. Empower People

- Implemented a new employee orientation program

## 5. Advance Sustainability

- Celebrated the 35th anniversary of The King's University College Foundation
- Held informal gatherings of alumni with the President in Surrey, Toronto and Ottawa
- Renewed our Campus Master Plan
- Conducted a feasibility study as to establishing a day care for the children of King's employees, students and the community

God is good! Thank you for your continued support and prayers. It is a tremendous privilege to serve at King's and to play a role in equipping and inspiring the next generation for the challenges that face our world. We have close to 5000 alumni serving God and serving to bring renewal and reconciliation in their spheres of influence.



DR. MELANIE J. HUMPHREYS

# KING'S FACULTY INTO THE WORLD

Our mission is to prepare our students to go out in the world. Our faculty are also going into the world, representing The King's University and the leading edge research taking place here. Below are just some of the presentations faculty members have made in 2015.

**ALFARO\*, B., TAPPENDEN A. F.**

"Evaluating XML Generators for Software Testing." Canadian Undergraduate Computer Science Conference, Kelowna, BC.

**BUHIIRE\*, E., FERBER, M. P., WILLSON, L. R.**

"Envisioning the end: The impact of end-times beliefs on environmental mindsets." Western Canadian Association of Geographers, Annual Meeting, Kelowna, BC.

**BUHIIRE\*, E., WILLSON, L. R., FERBER, M. P.** "The end is not the end: Expectations of the end-times and environmental engagement." The 28th Annual Psychology Undergraduate Research Conference, University of Saskatchewan, Saskatoon, SK.

**DEMOOR, M.** "Evolution, Politics, and Social Hope." Biologos Conference, Grand Rapids, MI.

DYK, J., **KAYE, J.** "Human Trafficking at the Local Level: Informing (Inter)national Action Plans." European Society of Criminology, Porto, Portugal.

**FEAVER, A.** "Euclid's algorithm in multi-quadratic fields." AMMCS-CAIMS Congress, Waterloo, ON.

**FEAVER, A.** "A theorem on norm-Euclidean rings of integers." Alberta Math Dialogue, Lethbridge, AB.

FOSTER, W., SUDDABY, R., **WIEBE, E.** "The role of archivists in creating organizational memory assets." Academy of Management annual meeting, Vancouver, BC.

**HALUZA-DELAY, R.** "Responding when the Sacred Canopy Burns: Religious Climate Activism." Association of American Geographers, Chicago, IL.

**HALUZA-DELAY, R.** "Whither environmental justice in environmental education?" American Education Research Association, Chicago, IL.

**HALUZA-DELAY, R.** "Climbing Shasta with John Muir and my Younger Self." Thinking Mountains 2015, Jasper, AB.

**HAUGRUD\*, E., TAPPENDEN A. F.** "Adapting XML Instance Generators for Web Service Testing." Canadian Undergraduate Computer Science Conference 2015, Kelowna, BC.

**HIEMSTRA, J.** "Re-considering the state's role in creation care: A case study of issues and assumptions arising from the tar/oil sands developments." The Henry Symposium on Religion and Public Life, Grand Rapids, MI.

**KAYE, J.** "Disciplining Indigenous Women: Reproducing Canada's Racial and Sexual Priorities through Anti-Trafficking Discourses." Controlling Sexuality and Reproduction, Past and Present International Conference. University of Lethbridge, Lethbridge, AB.

**KAYE, J.** "Human Trafficking in Settler-Colonial Canada: Naturalizing National, Racial, and Sexual Priorities." Canadian Sociological Association and Canadian Law and Society Association, University of Ottawa, Ottawa, ON.

**KAYE, J.** "Theorizing Internal versus International Trafficking: Naturalizing Criminalization and National Entitlements." Canadian Association of Refugees and Forced Migration, Ryerson University, Toronto, ON.

**KAYE, J., VRIEND\*, M.** "Intersections of Race, Class, and Gender in Human Trafficking in Alberta: An Environmental Scan." The King's University, Edmonton, AB.

**KITS, G.** "Learning about living well in the land: Decolonizing the economics curriculum." International Association for the Study of the Commons 2015 Conference, Edmonton, AB.

KLÜTSCH, C., MANSEAU, M., POLFUS, J., TATE, D., ANDERSON, M., TRIM, V., SIMKINS, P., SKINNER, G., SCHWANTJE, H., SERROUYA, R., PETERSEN, S., MCLOUGHLIN, P., **McFARLANE, K.**, GAMBERG, M., SIMMONS, D., WILSON, P. "Circumpolar meta-analysis of mitochondrial DNA reveals the complex phylogeographical structure and evolutionary history of Rangifer." 14th Arctic Ungulate Conference, Røros, Norway.

**KUIPERS\*, T., TAPPENDEN A. F.** "Geographical Information Systems as a Function of Time." Undergraduate Research in Science Conference of Alberta, Edmonton, AB.

**MAHAFFY, P.** "Inspiring and Motivating Chemistry Learning Through Visualization and Rich Contexts." Presidential Symposium on "21st Century Chemistry Education: Formal and Informal," 250th American Chemical Society National Meeting, Boston, MA.

**MAHAFFY, P.** "Deconstruction and Reconstruction of the Green Chemistry and Engineering Education Highway." American Chemical Society, 19th Annual Green Chemistry and Engineering Conference, Washington, DC.



**MAHAFFY, P.**, HAACK, J. "Defining Learning Objectives that Infuse Green Chemistry and Engineering into the Curriculum." American Chemical Society, 19th Annual Green Chemistry and Engineering Conference, Washington, DC.

**MAHAFFY, P., MARTIN B., KIRCHHOFF\* M., MCKENZIE\*, L.**, Holme, T., Versprille, A., Towns, M. "Designing and Implementing Research-Based Approaches to Teaching From a Rich Context." 98th Canadian Society for Chemistry National Conference, Ottawa, ON.

**MAHAFFY\*, M., PETERS, V.** "Characterisation of growth in planted *Pinus flexilis* seedlings on restored rangelands in the Montane Ecoregion of Alberta, Canada." Undergraduate Research in Science Conference of Alberta, MacEwan University, Edmonton, AB.

**MARTIN-VISSCHER, L.A., OOMS, K.J.** "Discovering, Creating, & Using: Does our teaching match our discipline?" 98th Canadian Chemistry Conference & Exhibition, Ottawa, ON.

**MARTIN-VISSCHER, L.A., OOMS, K.J.** "Discovering, Creating, Using: Does our Curriculum Match our Discipline?" 98th Canadian Chemistry Conference, Ottawa, ON.

**MC FARLANE, K., LOOY, H., WOOD, J.** "Engaging students with evolutionary theory." Augustana's 2nd International Teaching Workshop, Camrose, AB.

**MC FARLANE, K.**, Gunn, A., Campbell, M., Adamczewski, J., Dumond, M., Nagy, J., Wilson, G. A. "Differential genetic migration and the implications for barren ground caribou management." 14th Arctic Ungulate Conference, Røros, Norway.

**MC FARLANE, K.** "Keynote Address: Genetic diversity and inbreeding in wood bison (*Bison bison athabasca*) – a concern?" Reproductive Strategies for Addressing Genetic Diversity Workshop, One Reproductive Health Research Group and University of Saskatchewan, Saskatoon, SK.

**NGUYEN\*, M., PRIOR, H.** "Microinjection induction of cataracts in zebrafish." Undergraduate Research in Science Conference of Alberta, Edmonton, AB.

**OOMS, K.J.** "How we know: spectroscopy in the first year and beyond" 70th International symposium on molecular spectroscopy, Champaign, IL.

**OOMS, K.J.** "Contexts for Sustainability: Teaching Acid Base Chemistry and Electrochemistry using Rich Contexts." 98th Canadian Chemistry Conference, Ottawa, ON.

**OOMS, K.J., VANDERSCHEE\* C.R.** "Detection of Degenerative Disc Disease using 2H DQF NMR Spectroscopy: Connecting Tissue Health to Collagen Hydration." 98th Canadian Chemistry Conference, Ottawa, ON.

**OYAMA\*, J., PRIOR, H., LOOY, H.** "The role of faith in fertility decisions." 28th Annual Psychology Undergraduate Research Conference, University of Saskatchewan, Saskatoon, SK.

**PATRICK, M.** "Religion Education and Social Studies: A Vexed Issue." International Christian Community for Teacher Educators, Langley, BC.

**PATRICK, M.** "In times like these: Religion education in a pluralist context." Prairie Centre for Christian Schools Teacher Convention, Edmonton, AB.

**PEET, C.** "Psychological depth as a dis-integrative dynamic." Canadian Psychological Association (CPA) Annual Conference, Ottawa, ON.

**PEET, C.** "Methods and depth: A WCTP Symposium on Depth." Chair of symposium; Presented at Canadian Psychological Association (CPA) Annual Conference, Ottawa, ON.

**PRIOR, H., TUININGA\*, A., WHEATON\*, K., TUININGA\*, R.** "Evaluation of induced cataracts in adult zebrafish shows effects on visually induced behaviors and lens regeneration." Association for Research in Vision and Ophthalmology Annual Meeting, Denver, CO.

**SCHULZE\*, S., GUYOT\*, J., PRIOR, H.** "Alternative natural treatments for American Foulbrood in honeybees." Undergraduate Research in Science Conference of Alberta, Edmonton, AB.

**SPALING, H., WALKER, H., SINCLAIR, A.J.** "Adapting SEA to the Kenya context." Annual meeting of the International Association for Impact Assessment, Florence, Italy.

**STIENSTRA, W.** "Liturgies of Teaching/Learning Mathematics." Regional Un-Conference of the International Christian Community of Teacher Education, Langley, B.C.

**TAPPENDEN, A. F.** "Interdisciplinary GIS: Development Challenges and Potential Solutions." Association of American Geographers 2015 Annual Meeting, Chicago, IL.

**VANDERMEULEN\*, A. A. A., KAYE, J., WILLSON, L. R.** "The Shuswap Children's Association: A needs assessment study of fee-for-service programs for children with autism." The 28th Annual Psychology Undergraduate Research Conference, University of Saskatchewan, Saskatoon, SK.

**VANDERMEULEN\*, A.A.A., KAYE, J., WILLSON, L.R.** "Assessing the need, logistics, and achievability of offering fee-for-service programs at the Shuswap Children's Association." Technical Report presented to the Shuswap Children's Association, Salmon Arm, BC.

**WIEBE, E.** "Making sense with/in time. Futures beyond Strategy: Investigations of organizational agency in the creation of future practices and visions." Academy of Management annual meeting, Vancouver, BC.

**WILLSON, L.R., MUDE\*, M.** "Muslim belief in divine intervention and religious locus of control." Psychology Outside the Box annual conference, Ottawa, ON.

**WILLSON-GORDON, E.** "Modernist Archives Publishing Project." Digital Diversity: Writing, Feminism, Culture, University of Alberta and MacEwan University, Edmonton, AB.

**ZINCK, A.** "Politics and the English Language (with apologies to Mr. Orwell)" When the Topic is Radicalization: Panel Discussion #YEG interfaith, St. Joseph's College, University of Alberta, Edmonton, AB.



The January 2016 Interdisciplinary Studies conference focused on climate change and the global and human ramifications associated with it. In particular, special attention was paid to what a Christian response to climate change might look like.

Presenting at the conference were keynote speakers **Dr. Katharine Hayhoe**, and **Dr. Michael Northcott**. In addition MP for Edmonton-Strathcona, **Linda Duncan**, spoke to the federal government's historic and planned response to the issue of climate change. Hayhoe, a well-known Canadian atmospheric climate scientist, showed how the economies of the global North have caused severe weather changes and natural disasters in the economies and societies close to the equator.

Northcott, a Christian Ethics and ecology professor from the University of Edinburgh, articulated a need for our world to recover a sense that an economy needs to be beautifully connected to the land and people of our world. Northcott stressed that to be fully human requires loving God's creation deeply. In conjunction with the conference, The Leder School of Business hosted a breakfast event, *Driving the Future – Business Addressing Climate Change*, on how to practically address climate change issues. **Kent Rathwell**, President and Founder of Sun Country Highway, spoke of his experience leading the electric vehicle movement by raising awareness and promoting the adoption of zero emission transportation.



**P**laying God: The Gift and Risk of Human Power was the theme of last fall's Interdisciplinary Studies Conference held on September 23 and 24. The theme came from the provocative title of a book by the keynote speaker **Andy Crouch**, executive editor of Christianity Today.

Crouch explored the issue of power, which we often think of as a bad thing, **Roy Berkenbosch**, Director of the Micah Centre and Interdisciplinary Studies reports, "but power in and of itself is neither good nor evil; power is simply a capacity to take action and can be used for either." He talked about the dynamic between power and vulnerability and how we are called to be people who have great power and great vulnerability. "Humans were created in the image of God and were placed in creation to make something of the world," Berkenbosch says. "If we are imaging God, we need to use our power to accomplish the things God intends people to do."

The conference included a number of other presentations and breakout sessions: an interview with **Omar Khadr** by **Dr. Arlette Zinck**; an art installation by multi-media artist **Betty Spackman**; a concert by alumna **Justine Vandergrift** and a performance of "The Amish Project." Participants were also treated to a comedy presentation with Edmonton comic and pastor **Dan Taylor**.





King's alumna Ellen Doty

# ANNUAL COMMUNITY BANQUET & SILENT AUCTION A SUCCESS



left to right: Joshua Thomas, Celena Peters, President Humphreys, Abigail Douglass and Olivier Prophete



Dr. Tom & Dr. Alyce Oosterhuis

We raised over \$16,000 for student scholarships over the course of a lovely dinner and entertainment. President **Dr. Melanie Humphreys** delivered a thought-provoking speech about “seeking the peace and prosperity of our city.” Our vision is to be widely known as a Christian university serving to build a more humane, just and sustainable world. Students’ Association President **Abigail Douglass** earned a standing ovation from the audience as she reflected about her journey to becoming a King’s student. Another highlight of the evening was King’s alumna **Ellen Doty** and band, whose jazz performance had the crowd jiving in their seats.

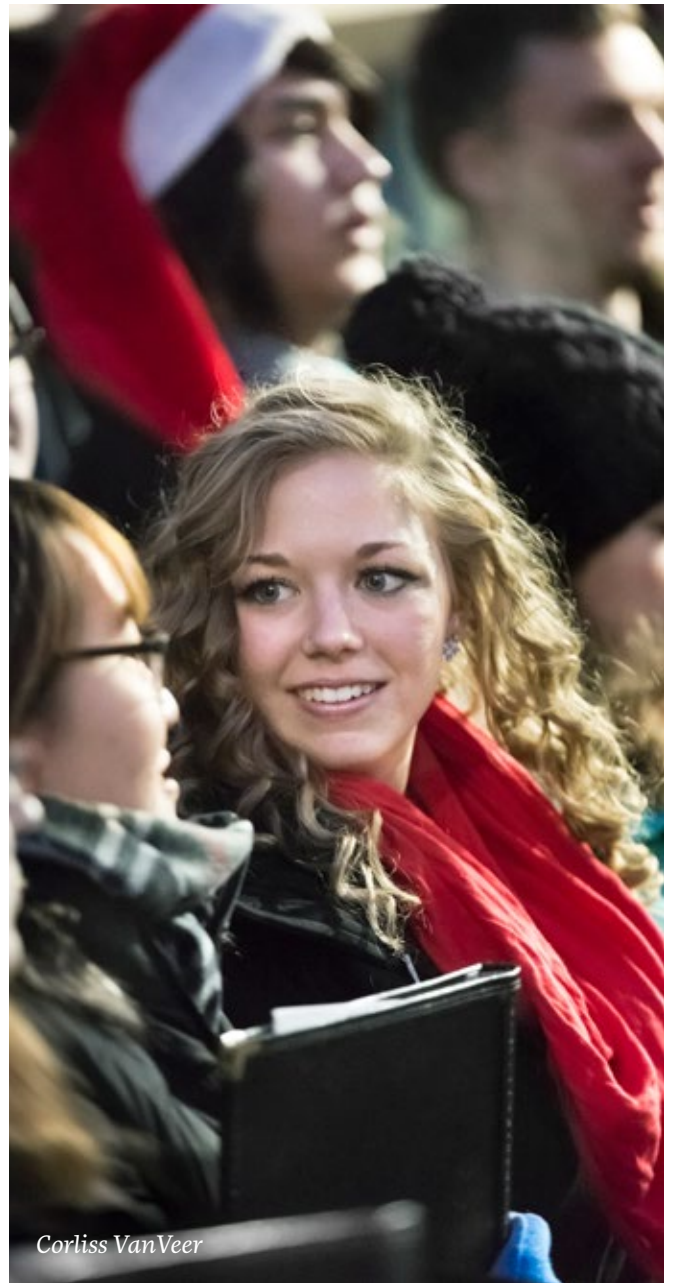
The evening was a great time to connect with over 225 of our extended community and to celebrate all things King’s. Join us on October 15, 2016 for another outstanding evening of fellowship and celebration.

# CHRISTMAS LIGHT UP

On November 19<sup>th</sup>, King's hosted its first Christmas Light Up, an event designed to usher in the Christmas season. As students, staff, and visitors from the community enjoyed food and drinks around the warmth of open fires, King's turned on its new LED Christmas lights. The event featured performances from the choir, a live dramatic reading, and a Christmas blessing from the book of Isaiah.

"It was nice to see so many come out to support and enjoy our light up event. The involvement we received from our local business community was fantastic," says **Karen Pucci**, Administrative Assistant, Development. Supporting businesses included Capilano Canadian Tire, Choices Catering and Ottewell TGP.

This event was just the start. King's hopes to make the Christmas Light Up a new exciting tradition—making the event bigger and, of course, brighter each year.



Corliss VanVeer



left to right: Danica Kampman,  
President Humphreys and Joelle Noot





Shoppers enjoy coffee and treats

## GUILD SALE EARNS HIGHEST REVENUE

The King's Guild Christmas Sale is a special and much anticipated event each year for our extended community. In its 34<sup>th</sup> year, the Guild Sale attracted more than 700 community members and raised \$5340. This is the highest revenue ever earned at a Guild Sale.

The Guild Sale proceeds are used for special projects not included in department budgets. Guild proceeds this year purchased large LED candles for the Prayer Room, suitcases for traveling recruitment staff, uniforms for janitorial staff and privacy study screens for the library.



Goodies galore



# WALKING THE TALK AT KING'S

BY SHIRLEY SERVISS AND DAN VANKEEKEN



A hand-crafted wooden bench rests in the courtyard between the old and new sections of The King's University within a semi-circle of snow-covered berry bushes. Artfully painted tiles are imbedded in the back of the bench on either side of an engraved plaque. It is a tangible symbol of King's commitment to justice for the survivors of Indian Residential Schools, reconciliation with Canada's aboriginal population and acknowledgement that the campus is located on Treaty Six lands. The commemorative garden resulted from King's students and faculty attending the March 2014 Truth and Reconciliation Commission (TRC) hearings in Edmonton.

It is only one of many such symbols of King's work toward God's shalom – justice, fulfillment, peace and delight – symbols both tangible and intangible.

"We try to live authentically out of the Gospel message and see what we are called to do," Vice President Academic **Dr. Hank Bestman** says.

Commitment to renewal and reconciliation permeates King's policies and programs, teaching and service projects. King's students are challenged in the classroom to think about the big picture. They also work alongside Edmonton's underprivileged in community gardens, experience life



among the poor in Central America and Africa, provide clean water to rural communities in Honduras, and wrestle with big issues at twice-yearly internal conferences, to mention just a few ways.

“Justice is a word that I am continually learning about,” says Students' Association President **Abigail Douglass**. “It isn’t and will never be a simple answer, but the more time I spend at King’s, the more I realize and understand what my call is as a Christian.”

The commemorative garden was dedicated last fall in a ceremony attended by several hundred students, faculty, staff, and community members. Our MLA **Marlin Schmidt** brought greetings and congratulations from the Government of Alberta. We were honoured by **TRC Commissioner Chief Littlechild**’s presence and his challenge to journey together towards deeper understanding and a fuller reconciliation. Our King’s Board member, **Rev. Canon Travis Enright**, himself of the Plains Cree people and pastor of an inner city Anglican church in Edmonton, led the prayer of dedication. The bench was built by **Dr. Brian Martin**, professor of Mathematics and Physics, and is inlaid with tiles decorated by students as their personal response to the TRC hearings.

At the event, President **Dr. Melanie Humphreys** restated the commitments King’s made in response to the TRC recommendations: to advocate for justice and dignity for residential school survivors, to speak out against racism, marginalization and systemic injustices, and to make King’s a hospitable place where all are welcome.

## OUR MISSION:

*We exist to provide university education that inspires and equips learners to bring renewal and reconciliation to every walk of life as followers of Jesus Christ, the Servant-King.*



left to right: Chief Littlechild, President Humphreys and Marlin Schmidt, MLA, Edmonton-Gold Bar



Truth and Reconciliation Bench

## ALL HAVE ALWAYS BEEN WELCOME

Right from “Day One,” as intended by its Reformed founders, King’s has had an open admissions policy where all are welcome. While over three quarters of King’s students identify with one of 38 Christian denominations, the institution still speaks with a reformed accent, as President Emeritus **Dr. Harry Fernhout** often said. Regardless of what they believe, they experience learning in a Christian institution that will present and discuss and research all manner of things through a profoundly Christian lens and heart that permeates everything at King’s.

“We don’t want to be a little hothouse for Christians with an ‘us-versus-them’ perspective,” **Dr. Bestman** says. “We’ve had students from all faith backgrounds here who felt very much at home because we take faith seriously.”

Every student is required to take foundational courses in Theology and Philosophy. There are weekly chapels and small groups abound. King’s is a supportive environment, taking a holistic Christian approach that aims to graduate students who will be true to themselves, true to their beliefs and sensitive to the needs of others.

The school also takes a restorative justice approach to dealing with student issues, as well as providing many supports for their spiritual and mental wellbeing. As Vice President for Student Life and Dean of Students **Dr. Michael Ferber** explains, “The King’s experience goes way beyond what happens in the classroom or on academic field trips. From weekly chapel services, to events for students living offsite, to residence life activities, we try to foster a climate where students develop interpersonal and intrapersonal skills while living out renewal and reconciliation in our community.”

*“We don’t want to be a little hothouse for Christians with an ‘us-versus-them’ perspective,”*

— DR. HANK BESTMAN

## “I AM NOT MY OWN”

**Dr. Bestman** reflects, “King’s has been in the world and not of the world since its early days on 97th Street downtown, where students were taken into the community and taught in the context of what was happening around them.”

Board member **Ariel DeJong** was a student in those early days. He met his wife **Pamela Havinga** at King’s and they have sent their three daughters to their alma matter. **DeJong** has a successful career as a lawyer at a top national law firm and is now in his fourth term on the Board of Governors. “King’s is the place, among others, where I truly learned and experienced the meaning of those words from the Heidlerberg Catechism, ‘I am not my own,’” **DeJong** explains. “This has made all the difference for me in my life and career. While I need constant reminding, it taught me to embrace the legal profession as a true ‘service to others’ profession. Others in my profession recognize and respect this difference.”

## COLLABORATIVE RESEARCH IN THE COMMUNITY

Deep connections within the community continue to be the hallmark of King’s. In the summer of 2014, King’s launched a community-engaged research initiative that sees students in their final year placed in social justice agencies to conduct mutually beneficial, collaborative research projects.

“It’s ultimately about being in relationship, trusting one another, valuing experiential knowledge, and building off that to work together,” says program director **Dr. Julie Kaye**. “Faculty and students at King’s are involved in research projects on environmental justice, social movements, development, food security, poverty, anti-colonialism, human trafficking, and a variety of forms of oppression associated with disability, gender, sexuality, race, citizenship and class.”

The commitment to social transformation is fundamental within the academic environment. While King’s supports, encourages, and is proud of its many instructors with international reputations,



*“It’s ultimately about being in relationship, trusting one another, valuing experiential knowledge, and building off that to work together,”*

— DR. JULIE KAYE

it’s not a “publish or perish type of university,” **Dr. Bestman** says. “We recognize a very broad definition of academic scholarship,” he explains. King’s has adopted a model of scholarship that encompasses discovery, application, pedagogy, integration and engagement. While King’s has a high degree of discovery-type of scholarship, the university also rewards other forms of scholarship, many of them directly related to social transformation.

For example, **Dr. Arlette Zinck** co-ordinates a team of post-secondary educators that includes King’s faculty members **Dr. Brian Martin**,

**Dr. Rem Kooistra** and **Dr. William Van Arragon**, who volunteer their services at Edmonton’s Maximum Security Institution. **Dr. David Long** engages men and boys in the prevention of family violence and facilitates a support group at Boyle Street Community Centre. **Dr. Kaye** is engaged in community-based research with sex workers and community organizations, focusing on harm reduction strategies. In her research she also works alongside indigenous people responding to violence against indigenous women. Her work has captured national and international attention, as has the work of many other King’s professors.

“Faculty members are strongly encouraged and supported to play a role in the community,” **Dr. Bestman** says. This means providing emotional support to faculty along with sabbaticals to conduct scholarship and write up their research, as faculty members try to model to students what it means to be a Christian committed to social transformation.

## INTERDISCIPLINARY STUDIES CONFERENCE / MICAH CENTER

### LEARNING TO TRANSFORM THE WORLD



Roy Berkenbosch

The goal of the Interdisciplinary Studies Conferences is to integrate what students are learning in their classes in an explicit Christian theoretical framework, and bring students to a deeper level of understanding,” says **Roy Berkenbosch**, who runs the Micah Centre and organizes the conferences. What he hopes students gain is “a compelling vision of what it means to be a Christian learner and a commitment to living lives that bring about transformation.”

“Engaging the entire campus community in the Interdisciplinary Studies Conferences generates a certain kind of energy that has not only been transformational for the students, but has contributed to the transformation of the university itself,” he says. The fact that King’s involvement with Omar Khadr and with the Truth and Reconciliation Commission both grew out of Interdisciplinary Studies Conferences testifies to the role they play in ensuring King’s lives out its mission.



## JUSTICE LOOKS LIKE JESUS

**M**y colleague **Dr. Doug Harink** has a beautiful phrase,” **Dr. Arlette Zinck** says, “Justice looks like Jesus.” Jesus was continually reaching across the borders of race, ethnicity, shame and distance, walls that keep people from recognizing another’s human dignity. Justice is being Christ-like as it says in Matthew 25, to feed the hungry, clothe the naked and visit the prisoner.”

King’s faculty and students were made aware at an Interdisciplinary Studies Conference on Human Dignity in the fall of 2008 of **Omar Khadr**’s incarceration by the American military. Khadr’s lawyer, **Dennis Edney**, ended his talk by saying that the situation was hopeless.

“Faculty and students said ‘we don’t do hopeless; it’s not a faithful response,’” **Dr. Zinck** says. The students were challenged to do research on the issue and came back with a proposal to hold an

information session. It was attended by members of the national news media and the story spread. Students wrote letters to Khadr that resulted in King’s faculty being invited to develop a curriculum for distance learning, which they did on their own time. Faculty continued to work with Khadr when he was transferred from Guantanamo Bay to Corrections Canada until his release in May 2015.

“Hope is a blessing I try to grasp and I find hope in small things. I never lost hope in the goodness of people or God and the goodness he has put in all of us.” says Kahdr.

***“We don’t do hopeless; it’s not a faithful response.”***

— DR. ARLETTE ZINCK

## PLUGGED INTO GLOBAL ISSUES

The Micah Centre for Social Justice, an interdisciplinary initiative at King's directed by **Roy Berkenbosch**, plays a major role in graduating students who are well informed on global issues such as poverty, hunger, displacement, war, HIV/AIDS and environmental destruction.



Carol Moreno

Through the Micah Centre, students also have an opportunity for experiential learning. For the past 20 years, King's has hosted a water project in Honduras in partnership with a number of other international organizations. The project provides students with an opportunity to

experience another culture and apply development principles and practices while working to provide access to clean water. It is transformational for many.

"King's helped me to see that many injustices in this world stem from broken relationships," says alumna **Carol Moreno**, Manager of Community

***"King's helped me to see that many injustices in this world stem from broken relationships"***

— CAROL MORENO

Engagement at King's, which includes alumni relations. "The Honduras Water Project taught me that it takes courage, perseverance and humility to walk alongside our struggling brothers and sisters. I feel like this experience really shaped my understanding of servant leadership and I encourage all King's students to take advantage of this life-changing opportunity."

Study tours also take students to Bangladesh to study different models of community development. King's students are guests of Quest Mexico over spring break to visit people in various situations of poverty and learn about social justice in the face of corruption.

Internships as part of the Micah Certificate Program provide students with the opportunity to work in inner city agencies within Canada and in various countries around the world.

"In partnership with organizations such as the Social Justice Institute, World Renew, the Mennonite Central Committee and World Vision, we've had students serving in Zambia, Cambodia, Haiti, Kenya, Tanzania and the Philippines," **Berkenbosch** says. Locally, students are involved with organizations such as the Mustard Seed, Catholic Social Services, Lady Flower Gardens and the King's Community Garden.

**Tyler Struyk**, a fourth-year BA(PHE) student who is working on his Micah Certificate, spent a semester abroad in Central America, "learning to do justice through relationships," as he puts it. Through subjects like Latin American history, culture, politics, liberation theology, and socioeconomic issues, he learned about situations where justice had been done, or not, and discovered that "our assumptions about what it means to be a missionary, to help and do justice, are skewed by our North American perspective."



# LEDER UPDATE

## SIGNIFICANT STUDENT INCREASE IN SCHOOL OF BUSINESS

It may be Canada's newest school of business, but Leder has already taken large strides in establishing itself as an energetic and fast-growing fixture on the business education landscape and this fall saw another significant increase in enrolment.

The Leder School program has been carefully designed in order to integrate faith into work and studies, and to encourage Christian enterprise. As the tagline suggests, the Leder program ignites brilliance—a unique take on the success narrative propagated by other post-secondary business programs—as students are taught how to move beyond the classroom and apply Christian principles of love and mercy to future endeavors. It is that which makes the following updates and successes of the Leder School of Business so exciting to announce.



*Going Dutch at the Christian University  
of Applied Sciences*



## New Faculty Member – Dr. Daniel Kim

**Dr. Daniel Kim** arrived at King's during the summer months and has been very active in the area of new venture creation and international business. Dr. Kim holds not only strong academic credentials, but was the CEO of a Korean multi-national company operating in India. His classes combine academic theory with practiced skills. For example, in his Small Business Start-Up & Management class, students had to pitch new ideas to high-school student "investors" who had play money they could invest. The students' marks for the assignment were based on the amount of funding that they could attract.

# 1<sup>ST</sup> ANNUAL HIGH SCHOOL CASE COMPETITION



left to right: Amanda Zittlau, Joely Bragg,  
Tadiwa Nemutambwe



First Place Team left to right: Luke Millan,  
Januel Ibasco, Joseph Paul De Leon and  
Leder School of Business founder, John Leder.



left to right: Janika Sumaylo, Sebastian Salinas,  
Yordanos Mengesha and Danielle Roy

November saw the beginnings of another new tradition as the Leder School of Business hosted their first High School Business Case Competition. Fifty-nine high school students from 11 high schools across the Edmonton region were given 10 days to develop new and innovative business ideas to address the recommendations in the “End Poverty Edmonton Strategy,” a report commissioned by the city’s Anti-Poverty Task Force. The competition was held in partnership with the City of Edmonton.

Competitors had their proposals judged by BCom students, CEOs and leaders of Edmonton’s business and non-profit community. **Sarah Chan**, wife of Edmonton

Mayor Don Iveson, emceed the final round. The four finalist teams were evaluated by the following judges: **Anna Bubel** of Another Way Consulting; **Sandra Huculak**, Managing Director, Corporate Social Responsibility and Commercial Investment at ATB Financial; **Susan McGee**, Chief Executive Officer of Homeward Trust; and **Anne Smith**, President and Chief Executive Officer, United Way of the Alberta Capital Region.

The High School Competition was won by Team ‘GLJJ’ students, **Garth Eisenkrein** from Austin O’Brien High School, and **Luke Millan**, **Januel Ibasco** and **Joseph Paul De Leon** from Holy Trinity High School.

# STUDENT ENGAGEMENT

LEDER STUDENTS HAVE  
BEEN WORKING HARD  
TO MAKE THE BUSINESS  
SCHOOL A MORE EXCITING  
AND ENGAGING PLACE  
TO STUDY.

Earlier this year five teams of business students competed in our first annual internal case competition. Sponsored by the Christian Credit Union, King's students were given 48 hours to analyze an issue facing the Royal Alberta Ballet and develop recommendations designed to address the problem. The internal competition was won by the following business students: **Connor de Groot, Sarah McFayden, Steven Sypkes** and **Cassandra Sperling**.

Business students were responsible for organizing this year's orientation program to Kananaskis Provincial Park for a two-day white-water rafting trip.

Another group of students started a new club called Enactus on campus with a goal of "shaping generations of entrepreneurial leaders passionate about advancing the economic, social and environmental health of Canada."

Speaking of student successes, 28 students were matched with 16 business and community leaders for a one-year mentorship program. Participating mentors include three King's alumni: **Ben Battjes**, entrepreneur, investor and real estate developer; **Jason Spoor**, chief financial officer of Capital Region Housing Corporation; and one of Edmonton's top young realtors, **Jordan Seitz**. **Wally Mulder**, former executive director of The King's Foundation, **Dan VanKeeken**, current executive director and vice-president of institutional advancement at King's, and **Anthony Koleoso**, sessional and business professor at King's, MacEwan and Burman University, are also serving as mentors.

The other community members giving their time are the following: **Perpetuah Muthui**, IT recruitment coordinator at Alberta Health Services; **James Evans**, CBC's executive producer of Edmonton AM; **Phil Geusebroek**, director of marketing at Christian Credit Union; **Peter Jackson**, executive director at Saint John's Legacy Foundation; **Tetyana Khramova**, program director of the Career Mentorship Program at the Edmonton Region Immigrant Employment Council; **Alex Mather**, an infrastructure project engineer; **Gord McCallum**, founder, president and CEO of First Foundation Resident Mortgages; **Steve Mebs**, principal partner at Box Clever; **Stephanie Mitchell**, education and communications coordinator at the University of Alberta's Centre for Constitutional Studies; and **Kathy Schmidt**, broker and owner of Schmidt Realty and a member of the Advisory Council for Leder School of Business.



# WHY KING'S?

Potential students have many different options when deciding where to pursue post-secondary education. Why do they choose to attend King's?



## KEZIA WRIGHT

BEAUMONT, ALBERTA

The main reason **Kezia Wright** chose King's is that it's a Christian University. "It means so much to me having my faith being integrated into my courses, having chapel on Wednesdays and having Bible studies with friends from my classes," she says. Although she grew up in a Christian home, she didn't go to a Christian school, so she finds the atmosphere novel and loves it. That said, she affirms that King's welcomes everyone no matter what their faith background, and says their personal views and values will be respected.

The fact that King's is a small university with small class sizes also appealed to her, coming from the small town of Beaumont, just south of Edmonton. Wright says that both students and staff are friendly and take the time to get to know you. "King's facilitates programs that ensure that all students find a place to fit in and a group they feel comfortable with."

Wright cites the student retreat for first-year-students as one such program. "There is no way you can walk away from that weekend without new friends in tow." Theology and psychology are her two favourite classes. She doesn't have a declared major yet, but says it will likely be either psychology or sociology.



## AMALYA HAKOBYAN

YEREVAN, ARMENIA

**Amalya Hakobyan** comes from Yerevan, Armenia, in Eastern Europe. She moved to Edmonton to get her Bachelor of Arts in English and Drama at The King's University. In the future, she hopes to do something in the film industry.

King's was the first university she came across while doing her research and it got her attention because of its small size and the fact that it is a Christian University. "I come from a very Christian background," she says and explains that there are hardly any Armenians that aren't Christian. "Armenia was the first country to accept Christianity as their state religion and for all these years we stayed true to our faith!"

While those may have been the reasons she chose King's, what kept her here from day one is the caring community. "King's is like a bubble of positivity and kindness and I'm very happy that I'm able to spend so much time with such amazing people."

She loves the commuter programs. "There's always so many cool people and so much free food that it's practically impossible to not enjoy all these events."

# JUMPING IN WITH BOTH FEET

BY SHIRLEY SERVISS



*Alyssa and Theo Bandstra*

When **Theo Bandstra** (BCom '08) graduated from King's, he probably didn't imagine himself owning the Home Hardware store back in his hometown of Smithers, B.C. In fact, he spent two months cycling across Canada and the U.S. with the 2008 C2C bike tour raising funds for poverty prevention and relief, finishing off with eight months of travelling in Australia. Running a Student Work's painting franchise during the summers paid for his university expenses and his post-university gap year.

Bandstra planned to follow his degree by getting his accounting designation, but plans have a way of changing. After working in accounting in Victoria for five years, that goal lost its appeal. Then, in 2013, the Smithers Home Hardware came up for sale.

"My business experience, along with my education and parents' encouragement gave me the confidence to take on the hardware store, despite never having worked a day of retail in my life," he says. "It seems that's the best way for me—just to jump in with both feet."

He and his wife Alyssa were happy to move back to their hometown to be near extended family. "Smithers is a great place to live," Theo says. "It's a small town with big amenities, but a small-town feel."

Operating the hardware store became a joint effort with Theo doing the ordering and managing the floor operations and Alyssa acting as office manager, doing the bookkeeping and administration. "The beauty and the challenge of small business is that we're in it together," he says.

Separating work and home life is difficult with the store open six days a week, but they enjoy time with friends and family when they can and are involved in the Smithers Christian Reformed Church. Bandstra serves on the church council and his hardware business sponsors the annual golf tournament that raises funds for the Christian school.

Bandstra has good memories of his years at King's. He appreciated having a Christian education for elementary and high school and chose King's to continue in that tradition. "I liked that I wasn't just a student among many at a big campus," he says. He also appreciated the opportunity to hang out with his classmates in the café between classes and chat with his profs in the hallways about school and unrelated topics. "Having grown up in a smaller school, it was an easier transition."

Asked about the value of his education at King's in running a business, he responds: "It's not like I can say I'm applying my knowledge of Gantt Charts to everyday operations. "What it did do is provide a worldview built on Biblical truth and business basics that determines how I approach everyday issues, both in business and outside of it." He explains that his faith influences the way he interacts with people, manages his time and makes financial decisions.

"As 'Reformed' Christians, we see the whole world under God's sovereignty, so all aspects are governed by His call on my life."



CHRONOS VOCAL ENSEMBLE, WINNER OF THE HEALEY WILLAN GRAND PRIZE IN THE NATIONAL CHORAL COMPETITION, FEATURES SOME EXTRAORDINARY KING'S ALUMNI TALENT INCLUDING **NAMISHA HLUS (BMUS '14)**, **NATHAN BOOTSMA (B.A. '15)**, **DAVID DYKSTRA (B.MUS. '12, B.SC. '12)** AND CURRENT STUDENT **DAVID MCCUNE (B. MUS. '16)** PLUS THE CHOIR'S FOUNDER AND DIRECTOR, **JORDAN VANBIERT (B. MUS. '04)**. CONGRATULATIONS ON THIS PRESTIGIOUS AWARD!

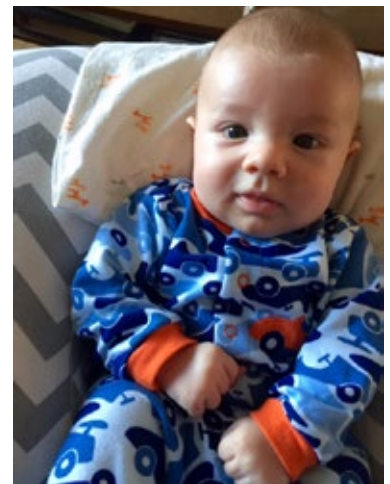
*Stacey Brandsma (B.Sc. '13) and Todd Jordan tied the knot September 12th, 2015 before heading back to Zambia for a couple more years of work through the Mennonite Central Committee. Follow their adventures online at [whineofwings.blogspot.ca](http://whineofwings.blogspot.ca).*



**DANIEL BROUWER (B.SC. '09) AND HIS WIFE, JOHANNA, WELCOMED THEIR DAUGHTER EDEN IN THE SUMMER AND THESE NEW PARENTS COULDN'T BE HAPPIER**

*Dr. Nathan Greidanus (B.A. '92), Assistant Professor of Business Administration at the University of Manitoba, was recently recognized for his exceptional teaching skills as the recipient of the Olive Beatrice Stanton Award.*

**Rachelle DeHaan (née Feenstra, B.A. '97)** started her own business, EJ and Emma Handmade, in October 2010 and continues to create a vintage-inspired, colourful collection of products.



**ADRIAN ('03) & BREANNE BENOIT (NÉE FOLKERS, B.A. '06 & B.ED. '08)** ARE PROUD TO SHARE THEIR HAPPY NEWS. THEIR FIRST CHILD, NIXON, WAS BORN AUGUST 25TH, 2015.



**Tyler (B.A. '07 & B.Ed. '10) & Krista Capton (née Sederberg, B.A. '07 & B.Ed. '09)** along with big sister Rhone welcomed a new edition to their family. Herschel Capton was born July 10, 2015.





**HANS DOEF (B.A. '04)**, CO-FOUNDER OF LACOMBE-BASED BLINDMAN BREWING CO., IS EXCITED TO SEE HIS LABOURS RESULTING IN A PROMISING BUSINESS. THE 2015 KING'S COMMUNITY BANQUET & SILENT AUCTION FEATURED THEIR BLINDMAN RIVER SESSION ALE THAT IS NOW AVAILABLE AT A VARIETY OF RESTAURANTS AND RETAILERS AROUND ALBERTA.

**Ellen Doty (B.A. '08)** had a stellar performance at October's Community Banquet. This Calgary-based jazz musician has a soulful voice and emotional depth in her song writing.



**David Fraser (B.Mus. '14)** and his wife, Qelsey, celebrated their wedding vows in the summer. It gives King's great pride to have David return to campus from time to time to share his love of music and gifts as a pianist.

**CODY (B.A. '13) & KARLA GAUTREAU (NÉE RUNHAM, B.A. '15)** ARE ACTIVELY INVOLVED IN THE EDMONTON ART SCENE. AT THE LAST FRINGE FESTIVAL, CODY PLAYED THE ROLE OF IVAN AND PRODUCER KARLA HAD A HAND IN THE MUSIC AND SCRIPT FOR "ANYA: A RUSSIAN FAIRYTALE."



**J. Simon Elzen-Hoskyn (B.A. '11)** was recently called to the bar in Alberta and will be practicing as an Associate at Witten LLP, in Edmonton, in the civil litigation group with an emphasis on Aboriginal law.

**Aleena Forstey (B.A. '14)** has joined the ranks of alumni staff at King's. We wanted the best of the best in order to provide key administrative support to our Vice-Presidents of Administration & Finance, Academic, and Institutional Advancement.



**REUBEN (B.SC. '07 & B.ED. '11) & ALANA MAHAFFY (NÉE STROUD, B.A. '08)** ANNOUNCE AN ADDITION TO THE MAHAFFY FAMILY. THEIR SON, CALEB JOHN, WAS BORN OCTOBER 23, 2015.



*Jordan (B.Ed. '13) & Amy Sevenhuysen (née Olthuis, B.Ed. '15) are living proof that teachers from King's are in high demand. Both of these recent graduates are pleased to be teaching at Vernon Christian School in British Columbia.*

*Darcel VanEmber ('08) loved her free King's onesie so much that she posted this adorable photo of her daughter Dahlia on Instagram and won our #KingsBaby basket. Interested in a colourful onesie for your alumni baby? Email [alumni@kingsu.ca](mailto:alumni@kingsu.ca) and we will mail it straight to your door.*

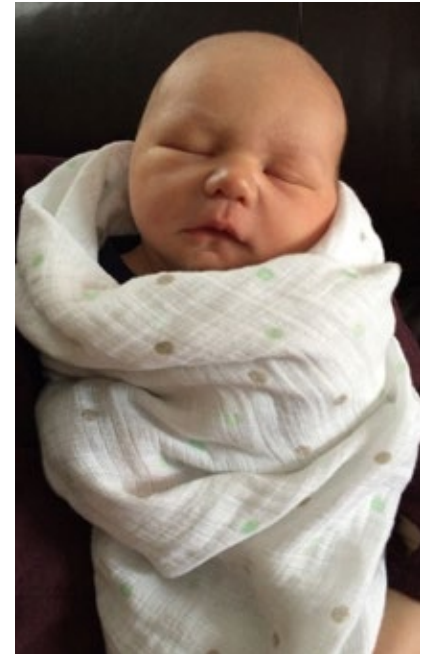


**Justine Vandergrift (B.A. '09)** just released her third album "Sailor" and has been touring all over Western Canada sharing her rich voice and thoughtful lyrics with her fans.

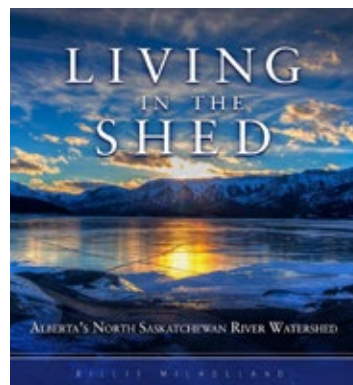
**MARK RAYMENT (B.SC. '12) & RIANNE NICOLAI (B.A. '07)** WERE MARRIED OCTOBER 3RD, 2015. THIS MEMORABLE OCCASION WAS CELEBRATED IN STYLE WITH MANY FRIENDS, FAMILY AND FELLOW ALUMNI.



**Sam & Rachel Nader (née deVries, B.Com. '11)** welcomed Oliver John Nader September 14th, 2015.



**Elton & Cassandra Wierenga (née Volkman, B.A.'11, B.Ed.'13)** were blessed with the safe arrival of their first child, Hendrik James, on February 3, 2016.



**Billie Milholland (B.A. '03)** let us know that her work with the North Saskatchewan Watershed Alliance will be more widely available, as her book "Living in the Shed" will be published soon. Its pages of colour photos, maps, charts and illustrations help to increase awareness of environmental issues and the impressive Alberta watershed.





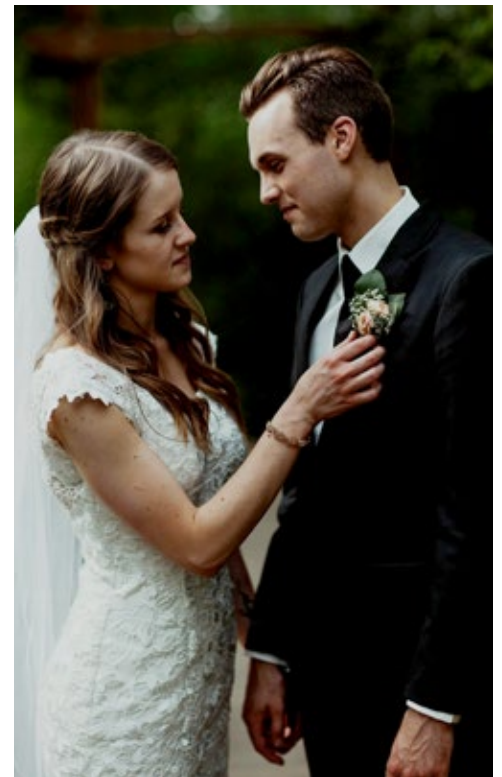
**BRI VOS (B.A. '06)** IS THE PHOTOGRAPHER BEHIND THE "SEXY MEN OF YEG" CALENDAR IN SUPPORT OF EDMONTON'S FOOD BANK. THIS IS THE SECOND YEAR THAT DETOUR PHOTOGRAPHY HAS PARTICIPATED IN THIS CREATIVE FUNDRAISER FEATURING MEN FROM EDMONTON'S VIBRANT FOOD SCENE.

**NIKOLAS VANDERKOOY (B.A. '15)** IS ANOTHER HARD WORKING ALUMNUS ON STAFF AT KING'S. HIS PASSION AND EXPERTISE IN THE AREA OF GRAPHIC DESIGN AND DIGITAL COMMUNICATIONS HAVE BEEN AN INVALUABLE ADDITION TO OUR MARKETING DEPARTMENT.

**Corinna VanNiejenhuis (née Tuininga, B.A. '04 & B.Ed. '06)** has recently become an independent designer for Origami Owl and creates unique pieces of jewelry and watches.



**Daniel Wassenaar (B.Com. '16)** has twice as much to celebrate this year as a newlywed and as he prepares to graduate from the Leder School of Business.



**CATHERINE WELKE (B.SC. '12)** IS CURRENTLY WORKING ON A MASTER'S DEGREE OF BIOLOGICAL SCIENCES AT THE UNIVERSITY OF LETHBRIDGE. HER FIELD WORK HAS TAKEN HER THROUGH THE WILDERNESS OF THE ROCKY MOUNTAINS AS SHE RESEARCHES GRADIENTS OF GENETIC VARIATION IN WHITE-CROWNED SPARROWS.



## BADMINTON STAR JOINS KING'S COACHING TEAM

Ogul Kaltakci



Badminton star **Ogul Kaltakci** joined the Eagles badminton coaching staff in time for their 2015-16 athletic season, a welcome addition to the team. **Kaltakci's** position at King's is supported through the Female Apprentice Coach Program, a program run by the Canadian Collegiate Athletic Association (CCAA) designed to give former student-athletes the start, confidence and professional development required in attaining higher level coaching positions. As the FACP program only accepts 12 applicants per year, it's quite an honour for both **Kaltakci** and King's to have been selected.

**Kaltakci** played the game at the international level, winning numerous gold, silver, and bronze medals for Turkey, her home country. She holds a Level 1 coaching certificate in Turkey and looks forward to getting her NCCP Level 2 coaching certification in the coming months.

"Ogul has been extremely successful, not only as an athlete, but as a student and as a person," says King's Athletics Director, **Grace Scott**. "She is an experienced singles and doubles competitor who can provide players with both technical and tactical feedback." Ogul is someone who has been able to strike a balance between enjoyment and competitive achievement, and whose experience and accolades will serve to show athletes just what they can achieve through dedication and hard work. Just as **Kaltakci**

will equip student athletes to succeed at their sport, she too will receive opportunities for professional development and support – the same opportunities available to all King's coaches.

"I am eager to coach at the college level," **Kaltakci** says. "I believe this will be a great opportunity to utilize my skills and experience. I'm excited to get involved with the game again."

A former international student, she is familiar with the challenges students from other countries face while studying abroad. She empathizes with the struggle to feel comfortable in a different culture and with the feelings of homesickness that often come with living so far away from their families.

"Ogul is expected not only to be an asset to the Badminton team, but to the university as a whole by helping other international students feel a little more at home in Canada," **Scott** says.

**Kaltakci** will be paired with a mentor—King's badminton coach **Naeem Haque**, a coach with nearly 30 years of ACAC Head Coach experience. Haque first saw Kaltakci play while she was a student at NAIT and was impressed by both her ability and character on the court.

It's hard not to be excited about the future of badminton at King's—a program only two years in the making, when a badminton expert like **Kaltakci** pairs with a veteran coach like **Haque**.

Naeem Haque



## MEN'S SOCCER TEAM IN ACAC CHAMPIONSHIPS

For the first time since the men's and women's soccer teams entered the ACAC in 2002-03, the men's team finished in the top three in the North Division of Alberta and earned a spot in the ACAC Championships. Congratulations to the Men's Team for this historic accomplishment!



*Back Row: Matthew Oosterhuis (head coach), Gregory Vander Vinne, Josiah Oresile, Harman Mundi, Volkan Yasa, Kenan Helgren, Brendon Degner, Elias Kui, Daniel Van Heyst, Todd Van Driel (coach). Middle: Aaron Steenhof, Matthew Carreiro, Tyler Struyk, Jorge de Paz, Divin Atumisi, Dimitri Njethong, Curtis Schick, Kyle Schempp. Front Row: Jesse Fuentes, Luis Puentes, Patrick Barayuga, David Freund, Wesley McNutt.*

## MATTHEW OOSTERHUIS HONoured

**M**atthew Oosterhuis was selected as the Men's North Soccer Coach of the Year for the 2015-16 season by the Alberta Colleges Athletic Conference.

Oosterhuis stepped into The King's University Men's Soccer Head Coach position in 2013. As an alumnus of King's, having graduated with a Bachelor of Arts in 2001, he was a member of the Eagles' Soccer team during its early stages prior to entering the ACAC. Helping to build the program at King's is very important to Oosterhuis, and he spent the last few years working extremely hard to recruit players and make King's known in the soccer community.

Entering the 2015-16 ACAC soccer season, Oosterhuis and his coaching staff were confident that their team could be contenders for the championships; however, with the majority of the Eagles' squad being first-year players they also knew that it would take time to come together as a team. As both an educator and a coach, Oosterhuis understands the value of creating an atmosphere that is both intense and encouraging. As a result he led the team to a number of King's records: most goals in a season, best season record, and a berth at the ACAC Championships for the first time in the program's history.



Matthew Oosterhuis

# NEW EXECUTIVE DIRECTOR NAMED FOR FOUNDATION

At its Annual General Meeting on October 2, 2015, members of The King's University College Foundation appointed **Dan VanKeeken** as Executive Director, replacing outgoing **Wally Mulder** who had fulfilled that role for several years.

**VanKeeken** has been the Vice-President for Institutional Advancement for The King's University since the fall of 2011. His responsibilities for the university have been modified to allow him to devote time to his additional role. The change will be reevaluated for effectiveness in two years.

Foundation Chair **Jim Josse** thanked former Executive Director Mulder for his leadership and service, and pointed out it was Mulder who encouraged the Board and members to reflect on the nature and purpose of the Foundation and its future. This resulted in a renewed sense of purpose and closer ties with King's through the appointment of **VanKeeken** to the Executive Director role.

In his final verbal report to members, **Mulder** reflected on what the Foundation has been able to achieve over the past seven years alone:

- *Raising close to \$1.5 million in contributions*
- *Launching the Secondary Education program*
- *Funding the Alumni Relations and Development positions*
- *Sponsoring Homecoming last year*
- *Paying for a suite in the tower and a new gym floor*
- *Funding the Campus Master Plan to hire an architectural firm*



Dan VanKeeken

"There has been amazing generosity," **Mulder** concluded. "The Foundation now needs a strategy going forward as the university expands, to give more in less time and chose specific causes from the new King's Shared Vision 2020 strategic plan."


For **VanKeeken**, his new dual role makes sense as many of the donors he visits are Foundation members and King's has already been providing financial and administrative support to the Foundation for some time. **VanKeeken** is well situated within King's to keep the Foundation, its Board and its members connected to all matters relating to the institution.

In other business, members at the AGM also agreed to change the Foundation's name to The King's University Foundation (dropping "College") and **Josse** agreed to remain the chair of the Foundation for another year.

## FOUNDATION

*The King's University Foundation is an intentional, inspirational, independent funding arm of The King's University to help support tomorrow's Christian leaders in all spheres of life.*





LEAVING A LEGACY

# PLANNED GIVING

John and Anna Feddes

**J**ohn and Anna Feddes have a long history of giving to their church, community groups, and to The King's University. If you've driven by Covenant Christian Reformed Church in Edmonton on a summer day, you may have seen John working in the community garden run through their church. Perhaps you've seen the beautiful quilts Anna creates and often donates to special causes including King's. John has served on Senate and the Board of Governors and Anna volunteers on the King's Guild.

Their strong affinity for community might have come from their rural roots, each having grown up on farms near Peers and Rocky Mountain House. They met while John attended the University of Alberta. They married in 1971, and briefly lived in Victoria, BC. They returned to Edmonton in 1975 when John secured a research position at U of A in the Faculty of Agricultural, Life & Environmental Sciences. He retired in 2007. Anna worked as an administrative assistant at the Edmonton Christian School and retired in 2005. During that time they raised three children: Eric, Mark and Jeanette.

***"We've always been impressed with the teaching at King's where students become critical thinkers."***

— ANNA FEDDES

In creating their estate plans they considered how to share the financial blessings that God had bestowed on them. They made bequests for their three children, and in light of their passion and commitment to Christian university education, they added The King's University as a fourth 'charity' child to receive a portion of their estate.

"We planned a bequest gift for King's because we both have been involved along the King's journey. In this way we can contribute in an important way to finance student scholarships or expansion projects," **John** says.

"Supporting King's is an extension of what we believe," **Anna** adds. "We've always been impressed with the teaching at King's where students become critical thinkers. Students are not spoon-fed but challenged on how to think about issues. The students that come out of there are amazing. It's a great place."

For information on planned giving for The King's University, please contact **Kathy MacFarlane**, Associate Director of Development: by telephone at 780-465-8352 or by email at [kathy.macfarlane@kingsu.ca](mailto:kathy.macfarlane@kingsu.ca)

# Nominate new board members!

Members\* can nominate candidates to serve as representatives on the Board of Governors. Nominations will be accepted until noon on Friday, March 11, 2016.

We are seeking representatives from:  
Alberta – Calgary, Edmonton and South  
British Columbia – Lower Mainland

Call: 780-465-8302 or  
Email: [judy.wach@kingsu.ca](mailto:judy.wach@kingsu.ca)



\*A member of The King's University is considered to be any person who endorses the Statement of Faith and Mission Statement of the University, and who has made a financial contribution during the past two full calendar years ending December 31, 2015.

## TD Insurance Meloche Monnex

Take advantage of  
your group privileges:

You could save **\$415\*** or more  
when you combine your home  
and auto insurance with us.

Home and auto  
insurance program  
recommended by



## Supporting you... and The King's University.

As an alumni of The King's University, you have access to the TD Insurance Meloche Monnex program, which offers preferred insurance rates, other discounts and great protection, that is easily adapted to your changing needs. Plus, every year our program contributes to supporting your alumni association, so it's a great way to save and show you care at the same time. **Get a quote today!**

Our extended business hours make it easy.

Monday to Friday: 8 a.m. to 8 p.m. (ET)

Saturday: 9 a.m. to 4 p.m. (ET)

HOME | AUTO | TRAVEL

Ask for your quote today at 1-888-589-5656  
or visit [melochemonnex.com/tku](http://melochemonnex.com/tku)



The TD Insurance Meloche Monnex program is underwritten by SECURITY NATIONAL INSURANCE COMPANY. It is distributed by Meloche Monnex Insurance and Financial Services Inc. in Quebec, by Meloche Monnex Financial Services Inc. in Ontario, and by TD Insurance Direct Agency Inc. in the rest of Canada. Our address: 50 Place Cr  mazie, Montreal (Quebec) H2P 1B6.

Due to provincial legislation, our auto and recreational vehicle insurance program is not offered in British Columbia, Manitoba or Saskatchewan.

\*Nationally, 90% of all of our clients who belong to a professional or an alumni group (underwritten by SECURITY NATIONAL INSURANCE COMPANY) or an employer group (underwritten by PRIMMUM INSURANCE COMPANY) that have an agreement with us and who insure a home (excluding rentals and condos) and a car on July 31, 2015 saved \$415 when compared to the premiums they would have paid with the same insurer without the preferred insurance rate for groups and the multi-product discount. Savings are not guaranteed and may vary based on the client's profile.

  The TD logo and other TD trade-marks are the property of The Toronto-Dominion Bank.

**RETURN UNDELIVERABLE  
CANADIAN ADDRESSES TO:**

The King's University  
9125 - 50 Street  
Edmonton, AB T6B 2H3  
Canada



# HAVE FAITH IN YOUR DEGREE

**KINGSU.CA**



By choosing King's, you can look forward to excellent professors, personalized instruction and a nationally accredited degree. Enjoy learning in an authentic, Christian community that will challenge your perceptions of the world, and your place in it.



THE  
**KING'S**  
UNIVERSITY

Caring community  
Faithful future

